

**PART NUMBER:** 010-253100

**PRODUCT DESCRIPTION:** The CDI-300-FO (Cloudy Day Illuminator®), is ideal for illuminating uneven specular surfaces. The CDI provides outstanding uniformity, up to  $\pm 10\%$  maximum deviation within the field of view. The unit requires two fiber optic sources.

**ILLUMINATION:**

**Lighting Technique:** Continuous Diffuse  
**Source Type:** Fiber Optic  
**Light Delivery:** Diffused  
**Light Aperture:** 200 mm x 350 mm  
 (8 in. x 14 in.)  
**Suggested Field Of View:** 150 mm x 255 mm  
 (6 in. x 10 in.)  
**Suggested Stand-Off:** 25 mm (1 in.)

**ENVIRONMENTAL:**

**Max. Operating Humidity:** 95% non-condensing  
**Operating Temp.:** 40°C (104°F)  
**Storage Temp.:** 50°C (122°F)

**MECHANICAL:**

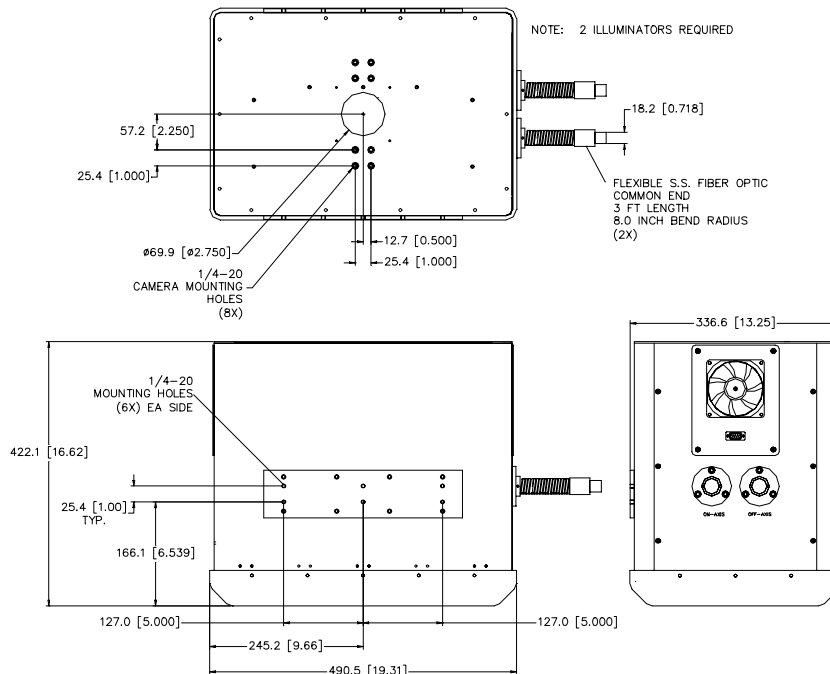
**L x W x H:** 490.5 mm x 336.6 mm x 422.1 mm  
 (19.31 in x 13.25 in. x 16.62 in.)  
**Mounting:** (6) 1/4-20 both sides  
**Housing Material:** Black Anodized Aluminum  
**Weight:** 11.34 kg (25 lbs.)  
**Accepts Ferrule (2) Ø:** 0.718 in.

**CONNECTOR PINOUT** (9-pin D-subminiature, Female)

**Pin # Signal**  
 1 Fan +12VDC, 225mA  
 2 Fan GND

**ACCESSORIES:**

Part Number	Description
238-001000	CS-1, AC Light Source
238-001100	CS-2, DC Regulated Light Source



Products are protected under US Patent #s: 5,461,417;  
 5,187,611; 5,539,485; 5,301,402; 5,604,550;  
 5,684,530; 5,713,661

NER Document: CU-010-253100 - Revised: 03/12/99