

# NERLITE®

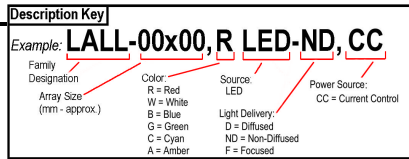
## LALL™-47x47 Large Area LED Lights

**Description:** LALL™-47x47 Large Area LED Lights deliver very high intensity, non-diffused area illumination to flood large (=12" square) areas with light. Their enclosures are designed for NEMA 4X and IP-64 compliance to address applications where equipment wash down is a requirement. LALL-47x47 units are passively cooled (no fans) for quiet, non-disruptive operation. Their adjustable mounting bracket supports installation to horizontal, vertical, or angled planes and provides virtually limitless light aiming options.

**Applications:** Dark-field (creating shadows and reflection) or bright-field lighting for diffused surfaces; Illumination of large areas for robot guidance; Food processing and packaging; Package sorting; Clean room illumination.



MODEL #	DESCRIPTION
010-655002	LALL-47x47, R LED-ND, CC, w/AMP Connector
010-655003	LALL-47x47, R LED-ND, CC, w/Flying Leads
010-655012	LALL-47x47, W LED-ND, CC, w/AMP Connector
010-655013	LALL-47x47, W LED-ND, CC, w/Flying Leads



### ILLUMINATION & ELECTRICAL:

**Lighting Technique:** Area Array  
**Active Area:** 47 mm x 47 mm (1.85 in. x 1.85 in.)  
**Light Characteristics:**

Source	Color (nm)	Exp. Life	Current (max.) <sup>1</sup>	
			Continuous	Strobe
LED	Red (625)	50k hrs.	0.35A	0.54A peak <sup>1</sup>
LED	White - 5500 Kelvin	50k hrs.	0.35A	0.46A peak <sup>1</sup>

<sup>1</sup> Exceeding maximum current voids product warranty

**CE Conformity:** Yes

### MECHANICAL:

**L x W x H (mm/in.):** 69.9 mm x 50.8 mm x 69.9 mm (2.75 in. x 2.00 in. x 2.75 in.)

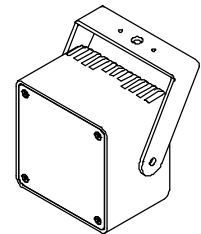
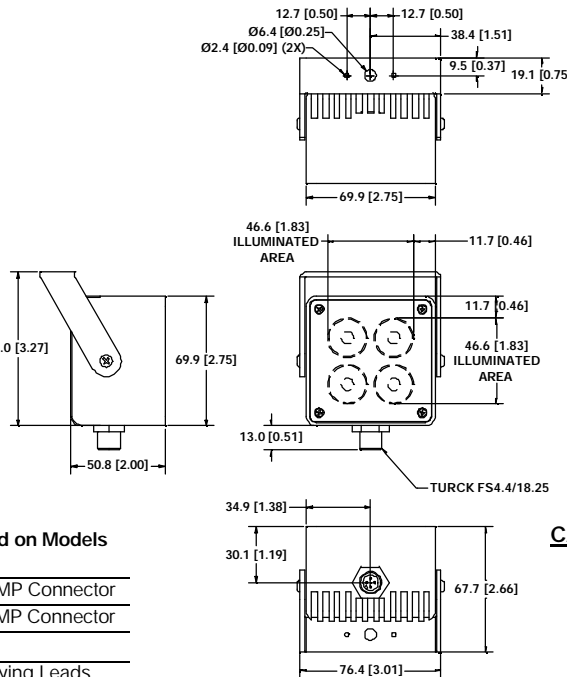
**Mounting:** (2) 2.4mm [0.09 in.] and (1) 6.4 mm [0.25 in.] thru holes  
**Housing Material:** Black Anodized Aluminum  
**Weight:** 454 grams (16 oz.)

### ENVIRONMENTAL:

**Max. Operating Humidity:** 95% non-condensing  
**Operating Temp.** 40° C (104° F)  
**Storage Temp.** 50° C (122° F)

### INSTALLATION OPTIONS:

Part #	Description	Used on Models
<b>Constant Current Source</b> (Continuous, full-intensity light):		
010-503400	CCPS, 0.35A Constant Current Drvr., 110V US	w/AMP Connector
010-503402	CCPS, 0.35A Constant Current Drvr., 230V EU	w/AMP Connector
<b>Lighting Controller</b> (Variable-intensity or strobe light):		
010-503300	PP600 Light Controller	w/Flying Leads
010-503301	PP610 Light Controller w/RS232 port	w/Flying Leads

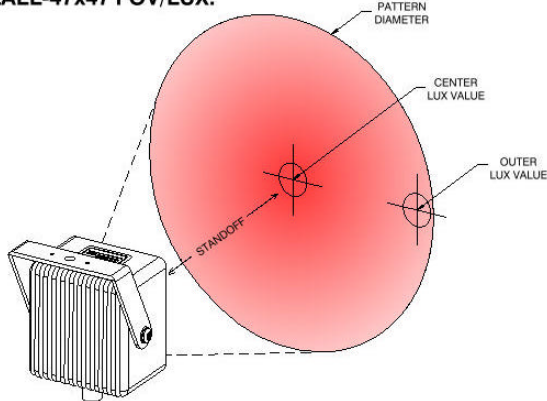


### CABLES/CONNECTORS:

Cable #	030-023102 <sup>1</sup>	030-023103 <sup>1</sup>
<b>Length</b>	3.0 M (9.8 ft.)	3.0 M (9.8 ft.)
<b>Connector</b>	AMP 173977-2	n/a, Flying Leads
<b>Pin# 1</b>	V+	n/a
<b>Pin# 2</b>	V-	n/a

<sup>1</sup> Detachable; supplied with light

### LALL-47x47 FOV/LUX:



See <http://www.nerlite.com/pdf/techrefs/nerlite-lall-fov-lux-data.pdf> for additional data.

### LALL-47x47, White LED Illumination Pattern

Standoff	Pattern Diameter	Lux Value (Center)	Lux Value (Outer)
3'	29"	1210	190
6'	39"	330	120
9'	50"	180	100
12'	60"	120	80

### LALL-47x47, Red LED Illumination Pattern

Standoff	Pattern Diameter	Lux Value (Center)	Lux Value (Outer)
3'	32"	1320	120
6'	55"	420	80
9'	78"	210	60
12'	100"	140	50



Products are protected under US Patent #'s:  
 5,461,417; 5,187,611; 5,539,485; 5,301,402;  
 5,604,550; 5,684,530; 5,713,661

**All RVSI/NER Products come with an Industry-Leading 2-Year Warranty**

RVSI/NER

15 Twin Bridge Road, Weare, NH 03281 USA

Tel: 603-529-2385

FAX: 603-529-2405

[www.nerlite.com](http://www.nerlite.com)