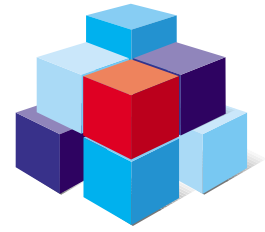


# Image Analysis Tools

# eVision



**eVision** forms a unique suite of software tools tailored to industrial machine vision.

The **eVision** tools are suitable for a variety of measurements, character recognition, mark inspection or surface analysis on grayscale and color images. The tools also contain pre-processing functions for image enhancement and noise reduction.

Easy to understand, open, and well documented, the **eVision** tools quickly integrate into any application requiring image processing or analysis.

The **eVision** tools are based on Object Oriented Programming (OOP) concepts. They allow you to develop your application under the most up-to-date programming environments and operating systems.

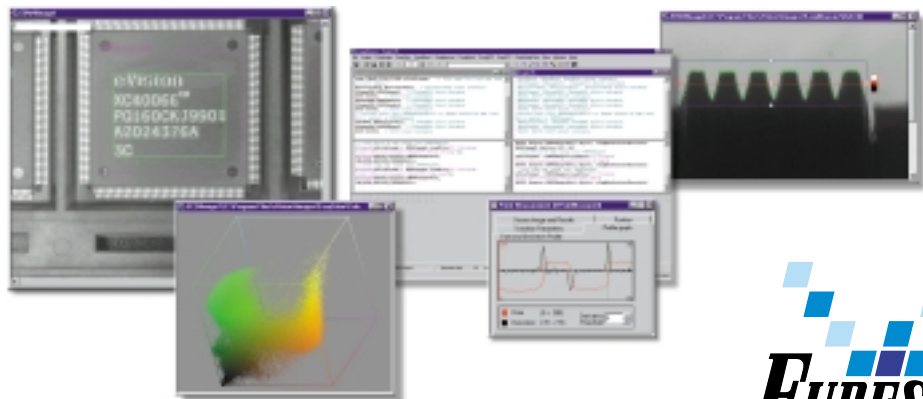
They exploit the power of your Pentium processor and are optimized for MMX technology.

- **Easy to learn and use**
- **Optimized for MMX**
- **Compatible with Windows 95, 98, 2000 and NT**
- **Compatible with Microsoft Visual Basic, Microsoft Visual C++, Borland C++ and C++ Builder**

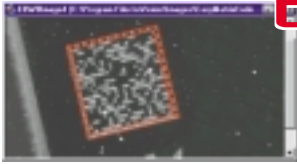
Libraries  
and  
ActiveX Controls  
included

## EasyAccess

For development, you can choose the user-friendliness of Visual Basic or the power of C++. In both cases, EasyAccess will help you to find the right function and develop the application's code.



**EURESYS**  
Excellence  
in vision

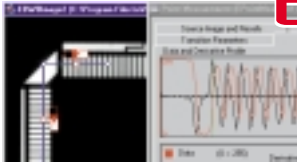


## EasyMatrixCode

Code rotation and scaling support  
Automatic code detection  
Error detection and correction

*Data Matrix 2D Code Reading*

Part identification  
Serial number verification



## EasyMeasure

Edge finding tool  
Line and circle fitting tools  
Measurement of sizes, angles and positions

*Sub-pixel Measurement*

Quality control  
Lead inspection  
BGA inspection

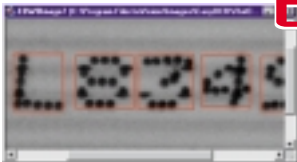


## EasyMatch

Sub-pixel precision  
Rotation and scaling  
Don't care areas

*Industrial Pattern Matching*

Die & wire bonding  
Fiducial alignment  
Printing

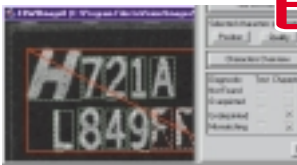


## EasyOCR

Teachable system  
Reliable and robust recognition  
Pre-defined fonts

*Optical Character Recognition*

Part identification  
Wafer identification  
Serial number verification

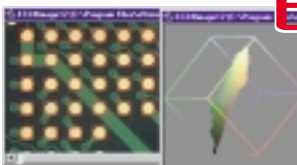


## EasyOCV

Automatic teaching  
Adjustable acceptance levels  
Grayscale analysis

*Optical Character Verification*

Mark inspection  
Label inspection  
Lot mixing verification



## EasyColor

Fast conversion to 11 color spaces  
Color segmentation  
Color verification

*Color Inspection*

Food inspection  
Printing  
PCB inspection



## EasyObject

Image segmentation  
Object labeling  
Geometric features extraction

*Blob Analysis*

Surface inspection  
Packaging inspection  
Object location



## EasyImage

Convolution and morphology  
Geometric transformations  
Image statistics

*Image Processing*

Image enhancement  
Image calibration  
Absence / presence check

Euresys s.a.,  
14, avenue du Pré Aily, B-4031 Angleur, BELGIUM  
Phone: +32 (4) 367 72 88 Fax: +32 (4) 367 74 66  
E-mail: info@euresys.com Web site: www.euresys.com  
US Office  
Toll free: 800 995 8009 Phone: 619 444 8300  
E-mail: richard.klotsche@euresys.com



Your distributor